

Job Name: \_\_\_\_\_

Location: \_\_\_\_\_

Purchaser: \_\_\_\_\_

Engineer: \_\_\_\_\_

Submitted To: \_\_\_\_\_

For:  Reference  Approval  Construction

Submitted By: \_\_\_\_\_

Date: \_\_\_\_\_

Unit Designation: \_\_\_\_\_

**Cooling Performance:**

Nominal Capacity	49,600 Btu/h
Nominal Sensible Capacity	39,500 Btu/h
EWT Range	40-50°F (5-10°C)
Nominal Flow Rate	10.0 GPM
Nominal Pressure drop	7.9 Ft/Hd

**Heating Performance:**

Nominal Capacity	57,000 Btu/h
EWT Range	100-125°F (38-52°C)
Nominal Flow Rate	10.0 GPM
Nominal Pressure drop	7.9 Ft/Hd



**Notes:**

- Cooling Capacity is based on 50°F Entering Water Temp and 80°F DB/67°F WB Entering Air Conditions.
- Heating Capacity is based on 110°F Entering Water Temp and 70°F DB Entering Air Conditions.
- Refer to detailed capacity tables for further information pertaining to the entire entering water temperature range and for flow rates and pressure drop.

**Airflow Rate:**

Nominal CFM	1825 CFM
Total External Static Pressure	Std: 0.3" WG / Max: 0.5" WG
Blower Speed setting	"A" FACTORY SETTING
Motor rating	1 HP

Airflow arrangement

Up-flow,  Horz. Left,  Horz. Right (Possible)

**Electrical Data:**

Power supply	120V / 1PH / 60Hz
Min. Circuit Amps (MCA)	15 AMP
Max. overcurrent protection (MOP)	15 AMP

**Physical Data:**

Dimension (H x W x D)	48"x21-1/4"x28"
Weight	290 lbs
Insulation type / R-Rating	1/2" JM TUF-SKIN

Installation Clearances: U.L. Listed for installation with Zero inches Clearance to Combustible materials

**Connection type**

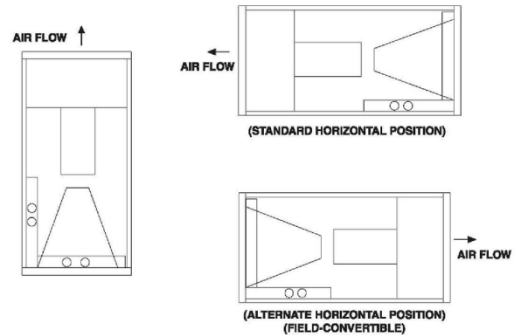
Inlet / Outlet Connections	1"(Nominal)
Connection Type	Sweat
Drain Connections	3/4"(M) NPT

**Feature:**

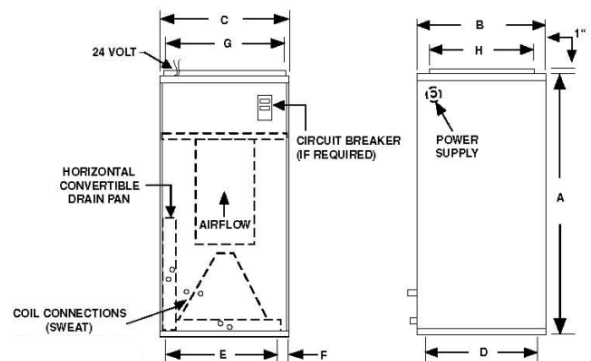
Air Filter (MERV 8 Throwaway)	20"x25"x1"
-------------------------------	------------

**Airflow arrangement**

**3-WAY AIRFLOW**



**Physical Dimensions**



A	B	C	D	E	F	G	H	FILTER SIZE
48	28	21-1/4	26-1/4	17-1/4	2	19-1/4	18	20x25x1